

AH&MRC CQI Conference

**18-19 June 2013 | Novotel, Sydney
Central**

Data Driving Change

What Works for Us

Improving Diabetes Care

Dr Helen Palmer

Matt Evans

Galambila AMS Coffs Harbour



GALAMBILA
Aboriginal Health Service Incorporated

Diabetes care

- Diabetes clinic evolved over 10 years
- 2010 MSOP funded Endocrinologist to complement existing service
- Endocrinologist commenced Nov 2010
- Australian Primary Care Collaborative in Feb 2011
- Use of PenCat for monthly measures for APCC

- To analyse data we needed good data entered
- Developed systems to enter, collect and evaluate data
- Ongoing Data cleansing
- Use of PenCat tool-invaluable
- Use Annual cycles of care
- Light Bulb Moments in Diabetes

Diabetes SIP Items 2011

Medical Director 3, HCN Live Data; Extract Date: 01/06/2011 4:00 AM; Filtering By: Conditions (Diabetes - Yes), Active Patient

Demographics | Data Quality | Allergies | Smoking | Alcohol | Measures | Pathology | Disease | Screening | Medications | Diabetes SIP Items | CKD | Musculoskeletal | CV Event Risk | Immunisations | CVD Risk - George Institute | Standard Reports

Items Recorded | Items Remaining | Items Completed Per Patient

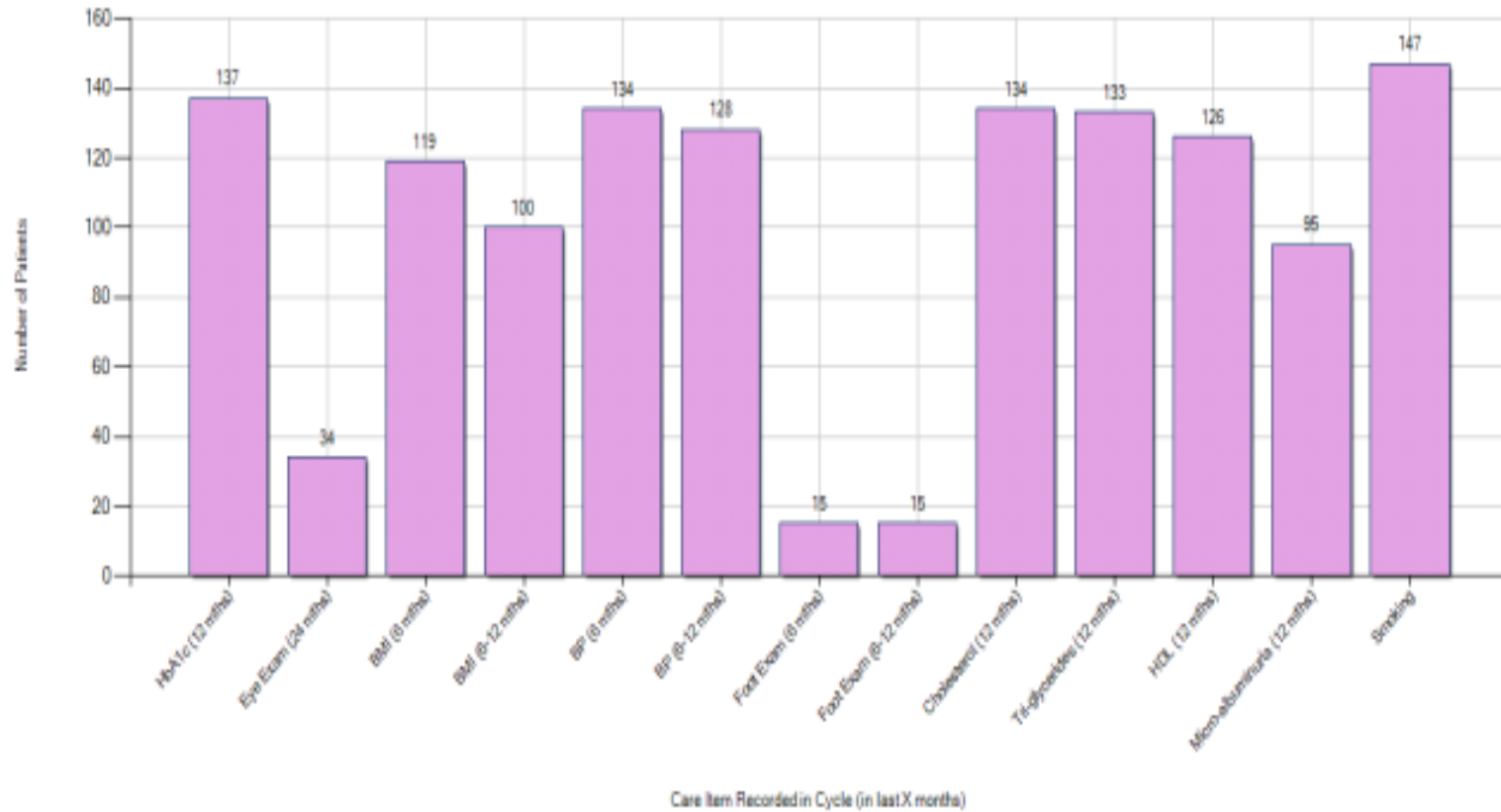
Select All

Timeline

Export

Print

Count of Patients with Diabetes SIP Item Recorded in Care Cycle [population = 150]



Diabetes SIP Items 2012

Medical Director 3, HCN Live Data, Extract Date: 01/06/2012 4:00 AM, Filtering By: Conditions (Diabetes - Yes), Active Patient

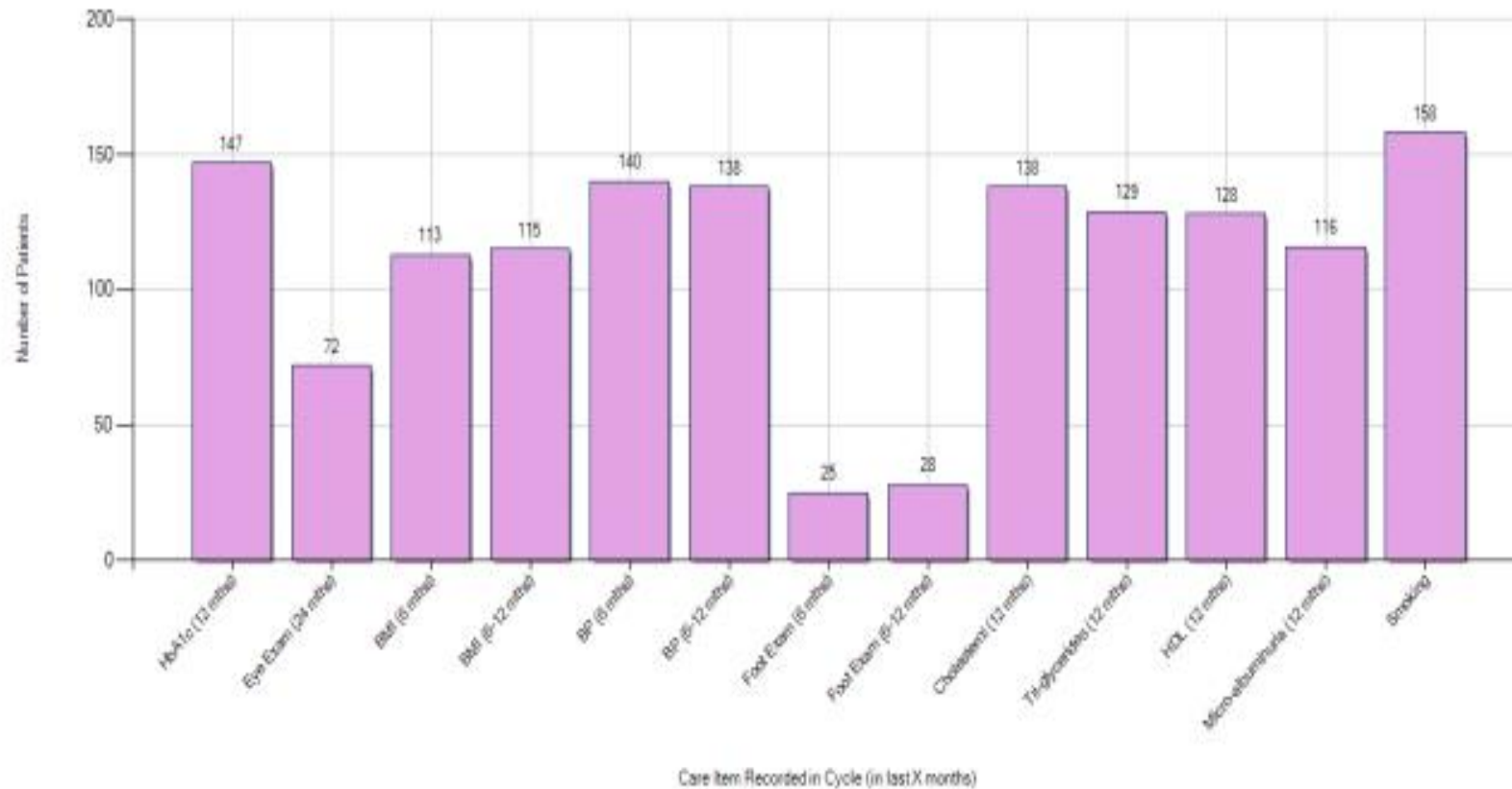
Demographics | Data Quality | Allergies | Smoking | Alcohol | Measures | Pathology | Disease | Screening | Medications | Diabetes SIP Items | CKD | Musculoskeletal | CV Event Risk | Immunisations | CVD Risk - George Institute | Standard Reporting | Items Recorded | Items Remaining | Items Completed Per Patient

Select All

Timeline

Export

Count of Patients with Diabetes SIP Item Recorded in Care Cycle [population = 159]



Diabetes SIP Items 2013

Medical Director 3, HCN Live Data, Extract Date: 01/06/2013 4:00 AM, Filtering By: Conditions (Diabetes - Yes), Active Patient

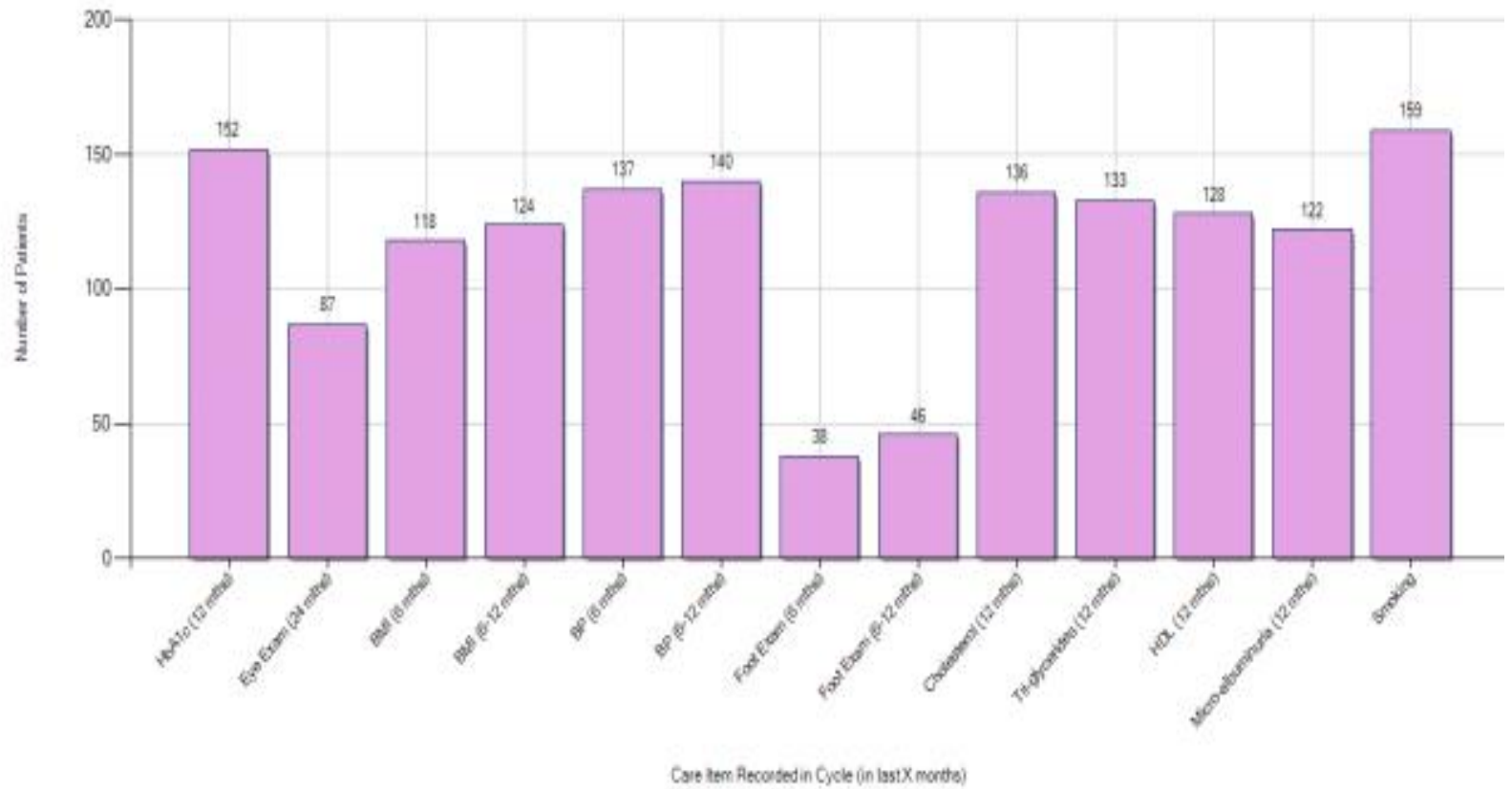
Demographics | Data Quality | Allergies | Smoking | Alcohol | Measures | Pathology | Disease | Screening | Medications | **Diabetes SIP Items** | CKD | Musculoskeletal | CV Event Risk | Immunizations | CVD Risk - George Institute | Standard Repo
Items Recorded | Items Remaining | Items Completed Per Patient

Select All

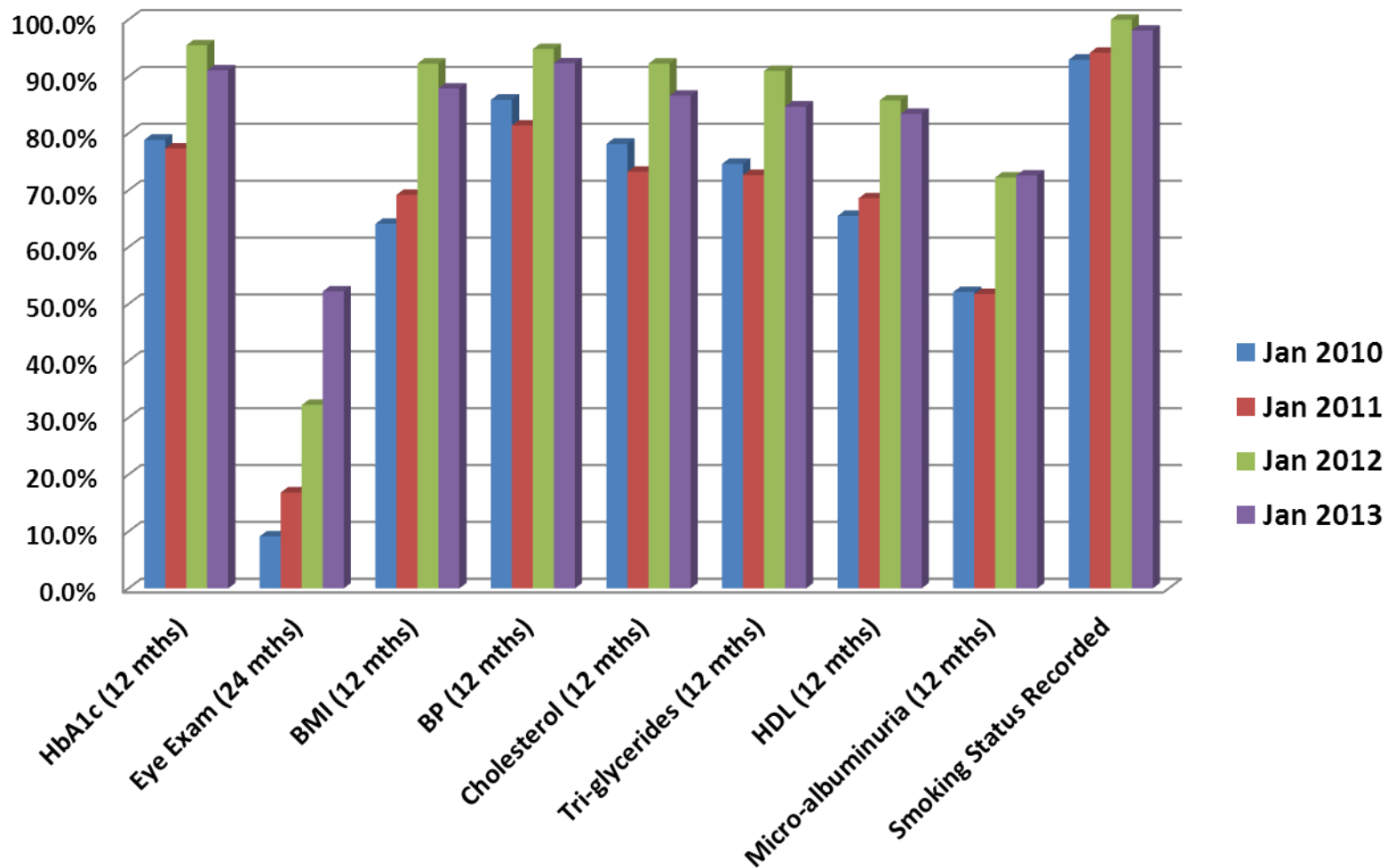
[Timeline](#)

[Export](#)

Count of Patients with Diabetes SIP Item Recorded in Care Cycle [population = 161]

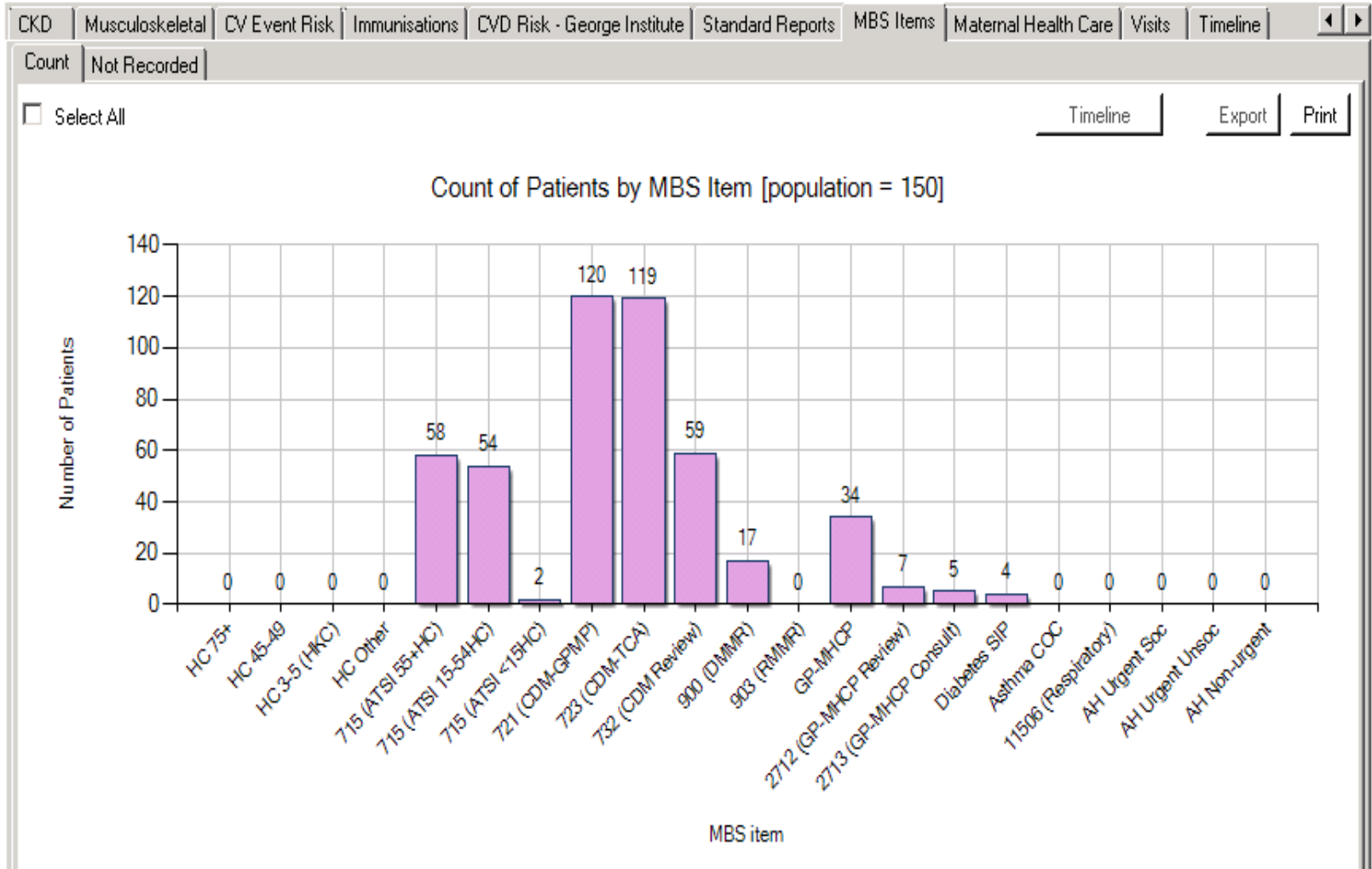


% of Diabetes Items



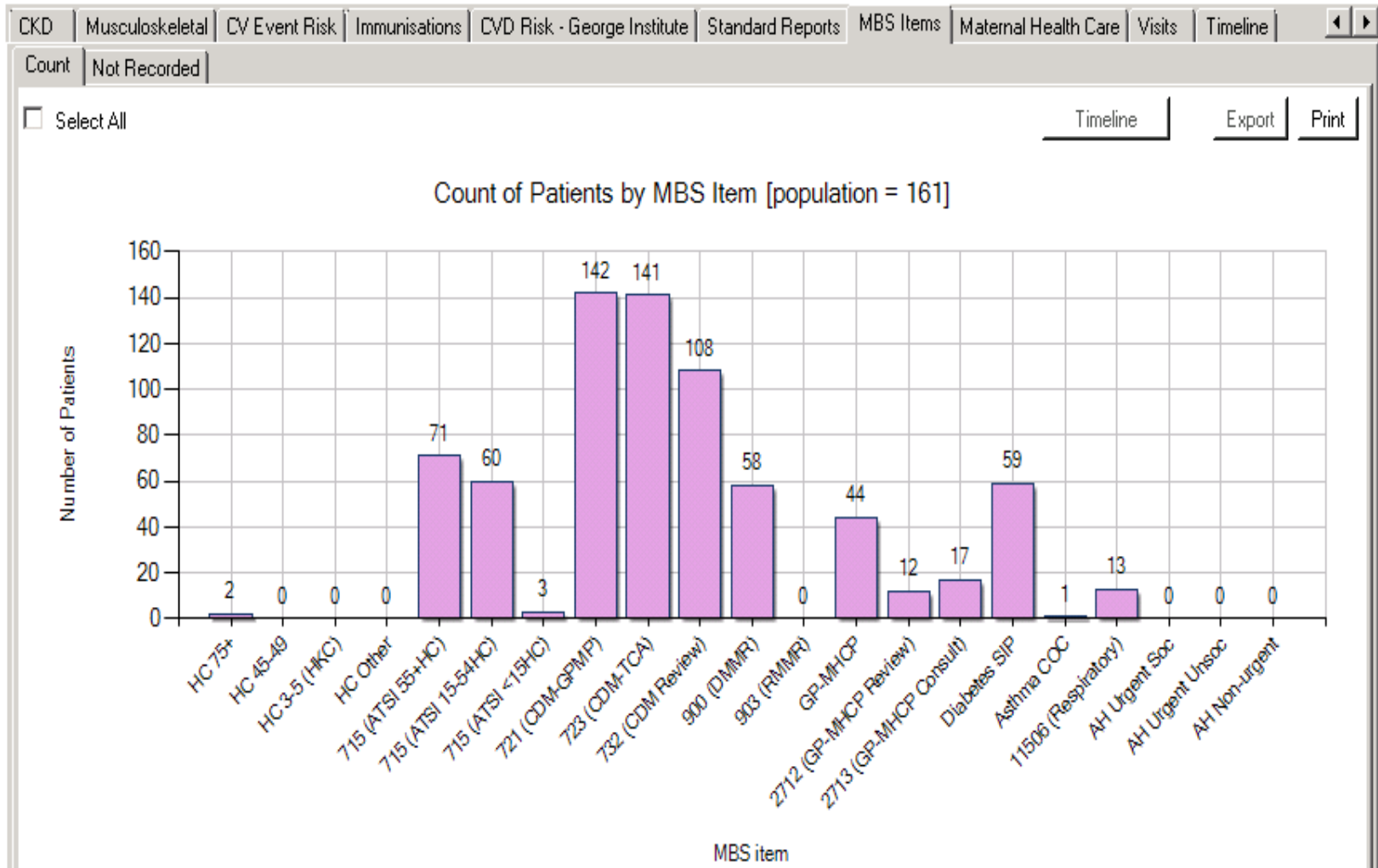
MBS Items claimed 2011

Medical Director 3, HCN Live Data; Extract Date: 01/06/2011 4:00 AM; Filtering By: Conditions (Diabetes - Yes), Active Patient



MBS Items claimed 2013

Medical Director 3, HCN Live Data; Extract Date: 01/06/2013 4:00 AM; Filtering By: Conditions (Diabetes - Yes), Active Patient



HbA1c 2011

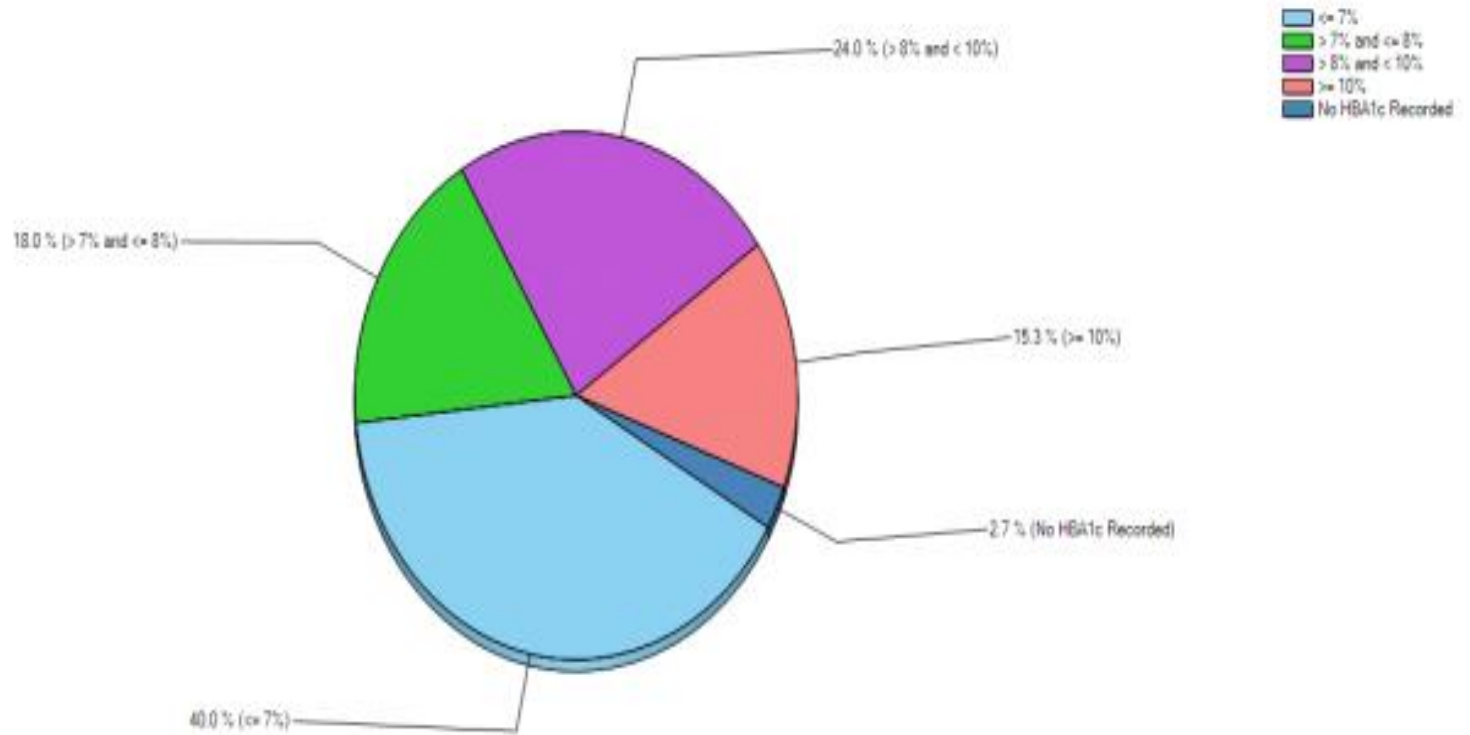
Medical Director 3, HCN Live Data, Extract Date: 01/06/2011 4:00 AM, Filtering By: Conditions (Diabetes - Yes), Active Patient

Demographics | Data Quality | Allergies | Smoking | Alcohol | Measures | Pathology | Disease | Screening | Medications | Diabetes SIP Items | CKD | Musculoskeletal | CV Event Risk | Immunisations | DVD Risk - George Institute | Standard Reports | Lipids | eGFR | ACR | Microalbumin | HbA1c | FBO | FBG | INR | Creatinine Serum

Select All Show Percentage

[Timeline](#) [Export](#) [Print](#)

HbA1c Status [population = 150]



HbA1c 2012

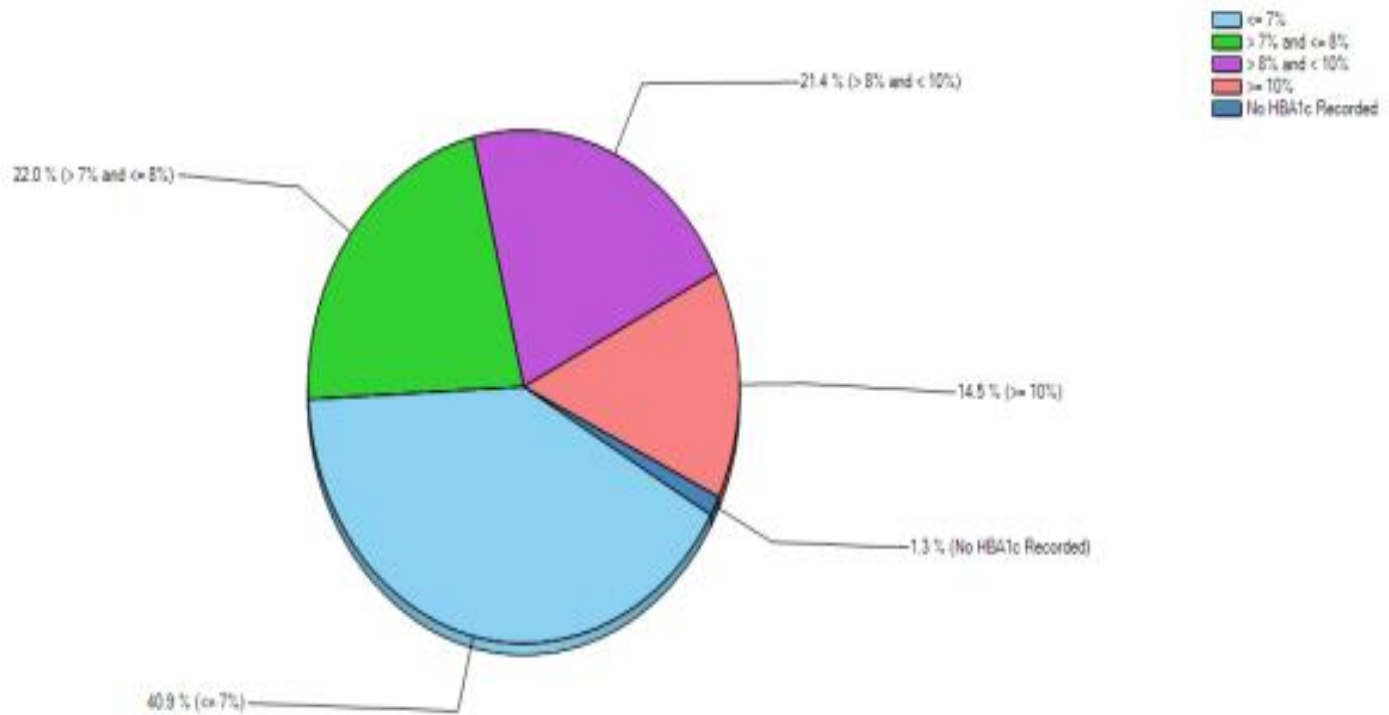
Medical Director 3, HCN Live Data, Extract Date: 01/05/2012 4:00 AM, Filtering By: Conditions (Diabetes - Yes), Active Patient

Demographics | Data Quality | Allergies | Smoking | Alcohol | Measures | Pathology | Disease | Screening | Medications | Diabetes SIP Items | CKD | Musculoskeletal | CV Event Risk | Immunisations | CVD Risk - George Institute | Standard Reports |
Lipids | eGFR | ACR | Microalbumin | HbA1c | FBG | FPG | INR | Creatinine Serum

Select All Show Percentage

[Timeline](#) [Export](#) [Print](#)

HbA1c Status [population = 159]



HbA1c 2013

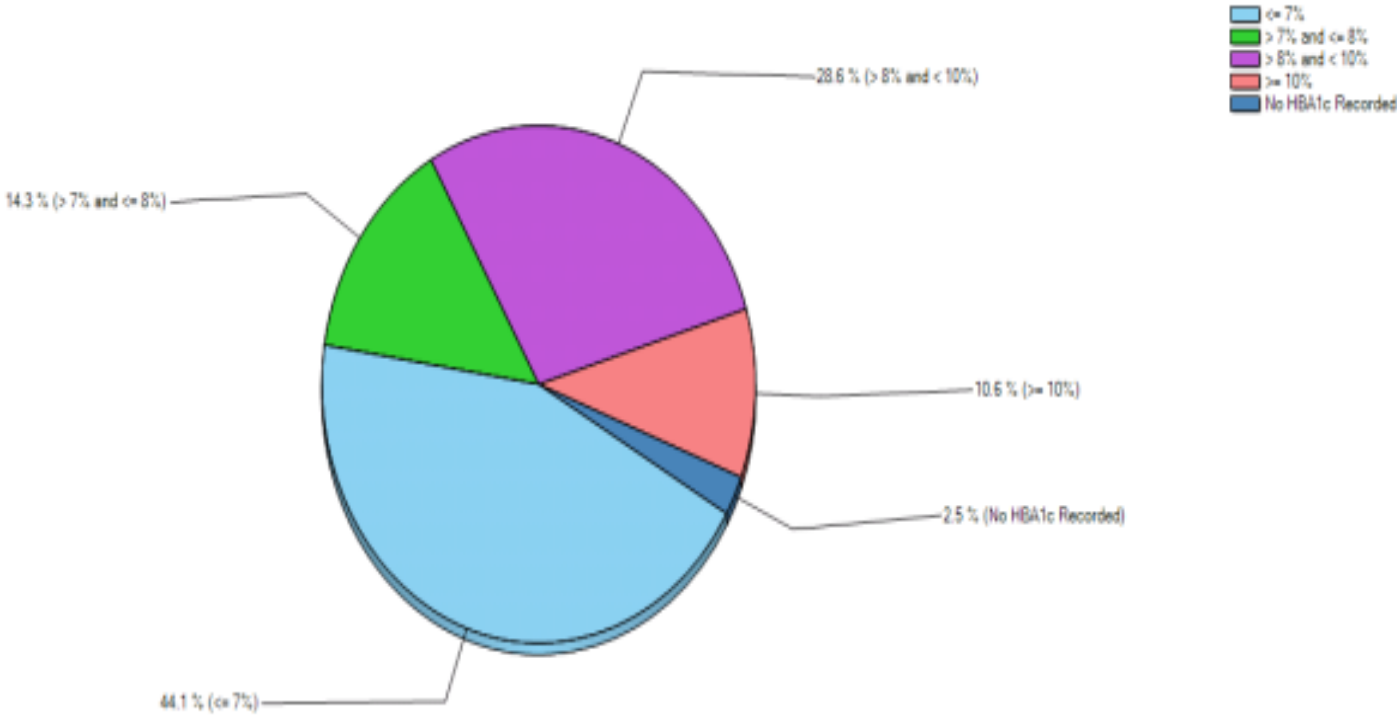
Wedge Medical > Full Live Data > Data View > 01/06/2013 14:00 AM: Filtering by: Conditions (Diabetes - 1st) Active Patients

Demographics | Data Quality | Allergies | Smoking | Alcohol | Measures | Pathology | Disease | Screening | Medications | Diabetes SIP Items | CKD | Musculoskeletal | CV Event Risk | Immunisations | CVD Risk - George Institute | Standard Reports |
Lipids | eGFR | ACR | Microalbumin | HbA1c | FBG | RBG | INR | Creatinine Serum

Select All Show Percentage

Timeline | Export | Print

HbA1c Status [population = 161]



HbA1c

